

WebCamera Plus v1.05 Manual



WebCamera Plus

1. [Getting started](#)
2. [ActiveSync Connection](#)
3. [Network Connection \(without ActiveSync\)](#)
4. [General settings](#)
5. [Resolution and Quality`](#)
6. [Visual settings](#)
7. [Screen Capture](#)
8. [Recommendations](#)
9. [Registration](#)
10. [Copyright and trademarks](#)

1. Getting started

WebCamera Plus allows using mobile device as external camera for Desktop computer. Connection can be established using USB, Bluetooth/Wi-Fi, GPRS/EDGE/3G, LAN.

To start WebCamera Plus open **Start Menu**, select **Programs** and click on corresponding icon. Use soft-keys and joystick to control program.

2. ActiveSync Connection

You can use USB or Bluetooth for ActiveSync connection.

- Establish ActiveSync connection between mobile device and desktop computer.
- On desktop PC start video capture program, and select "WebCamera Plus" video device.
- After few seconds you should see picture from mobile device camera on desktop PC.
- To disconnect press left soft-key or center of joystick on mobile device.

3. Network Connection (without ActiveSync)

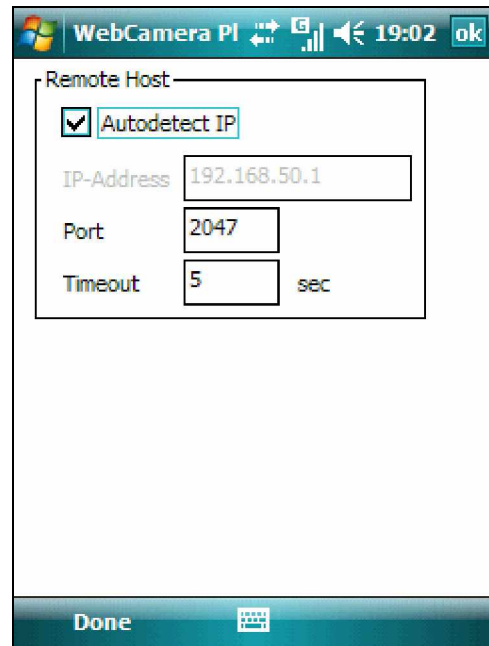
You can use Wi-Fi, Bluetooth (PAN-profile), GPRS/EDGE/3G or LAN for network connection.

- Establish network connection between mobile device and desktop computer.
 - In WebCamera Plus open "Settings" dialog (Menu->Settings) and **reset** "Auto detect IP" flag.
 - Enter network address of desktop PC in "IP-address" field.
 - On desktop PC start video capture program (Windows Movie Maker for example). In video capture program select "WebCamera Plus" video device.
 - To begin connection press left soft-key ("Start") or center of joystick on mobile device. After few seconds you should see picture from mobile device camera on desktop PC.
 - To disconnect press left soft-key or center of joystick on mobile device.
-

4. General settings.

Use menu to open general settings dialog (**Menu->Settings**).

- **Auto detect IP** - Set this option if you want to connect via ActiveSync, and reset if you want to connect via network (Wi-Fi, etc).
- **IP-Address** - Used only with network connection. You should enter IP-address of desktop computer.
- **Port** - Network port for connection. You should enter the same port in "WebCamera Plus Viewer" on desktop PC. By default is used port# 2047.
- **Timeout** - Time interval (in second) when mobile device will try to reconnect (if connection was broken).



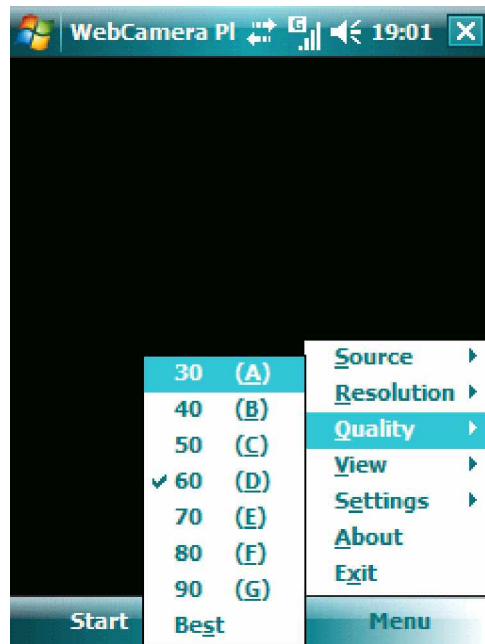
5. Resolution and Quality.

Using these settings you can control size and quality of transferred video.

- Select resolution: **Menu->Resolution**



- Select Quality: **Menu->Quality**. Value 30 corresponds to lowest quality, 100 corresponds to highest quality.

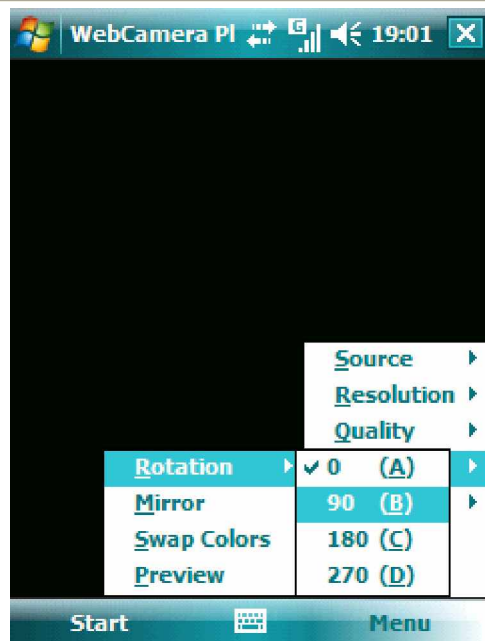


If you set higher quality and/or resolution you can get lower frame rate.

6. Visual settings

Using these settings, you can control rotation and reflection of camera image.

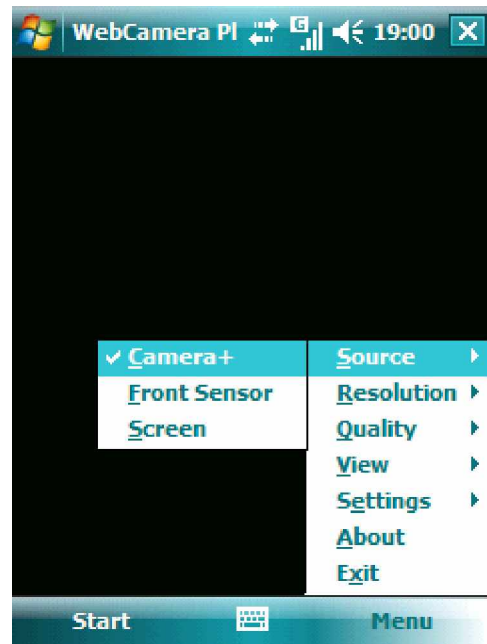
- Rotation: **Menu->View->Rotation**. You can select 0, 90, 180, 270 degrees.
- Reflection: **Menu->View->Mirror**. Allows reflecting image vertically. Combine this option with rotation to reflect image horizontally.
- Preview when transferring: **Menu->View->Preview** Allows to see image from camera on mobile device even when transferring is active. Video framerate may decrease if you set this option.



7. Screen Capture.

You can use WebCamera Plus for screen capturing and transferring video to desktop PC in real-time.

- To enter in this mode, select **Menu->Source->Screen**.
- To exit from this mode, select **Menu->Source->Camera**.



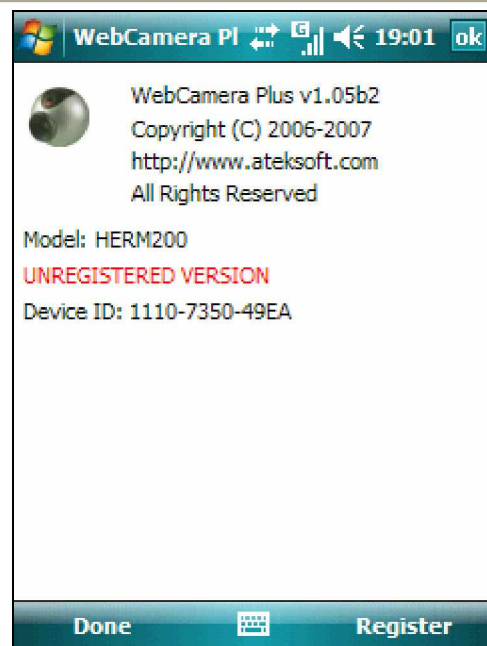
8. Recommendations.

- Do not start two or more video capture programs on desktop PC simultaneously.
- Turn off Windows XP firewall for video capture program.

9. Registration.

Unregistered version has some limitations.
Register your copy to get full version.

- Register program on our site <http://www.ateksoft.com/orderWC.htm>
- Send your Device ID to order email: order@ateksoft.com. You can see Device ID on "About" screen in program (**Menu->About**).
- You will get unlocking key (cab-file).
- Copy cab-file to any place on mobile device and install it.



10. Copyright and trademarks

Copyright © 2006-2007, Ateksoft Company Ltd. All rights reserved.

These materials are protected under copyright laws. Reproduction of these materials is expressly prohibited.

Microsoft is a registered trademark of Microsoft Corp.